

AG-RECON

RICE APPLICATIONS

1. IDENTIFY VARIABILITY

SOILMAP™ Flight Timing: Bare soils (fall soil amendment, spring preplant fert.)

Shows differences in Soil:

- Type, Salinity, Texture, Color, Moisture, Organic Matter, Compaction*, Bulk Density*, Perched or High Water Tables* and Soil Depth* (*depends on conditions)
- Calculates acres in each soil category

Use for: Targeted Soil Sampling, drain tile performance analysis and **Zone Management Program** (see **SmartSample™**, **SmartZone™**, and **SmartApp™**)



CROP ANALYSIS Flight Timing: Any time after first flag leaf to before crop senescence.

Combines: **MSIRMAP™**, **GROWTHMAP™** and **STRESSMAP™** into a crop diagnostic tool.

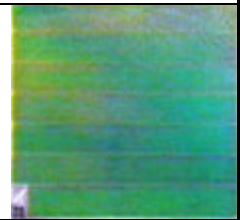
Use for: Targeted sampling and scouting, crop diagnostics, crop damage assessment and **Zone Management Program** (see **SmartSample™**, **SmartZone™** and **SmartApp™**)

MSIRMAP™

Shows differences in crop vigor:

- Indicating nutrient deficiencies (nitrogen), changes in growth, vigor, weeds, lodging, and leaf margin burning/necrosis (application error or spray drift)

Use for: Targeted Plant Tissue Sampling and Pest and Disease Scouting



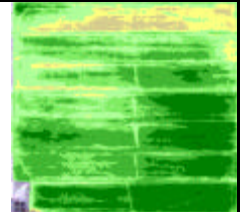
GROWTHMAP™

Shows differences in:

- Crop density, vegetative vs. reproductive growth, lodging and weeds
- Acres by crop growth density category

Use for:

Targeted Plant Tissue Sampling, Yield Sampling and Economic Analyses



STRESSMAP™

Shows differences in:

- Canopy temperature indicating reduced transpiration and plant stress

Use for:

Pest and Disease Scouting, Irrigation Audits and Targeted Maturity Scouting for timing to pull water and harvest management



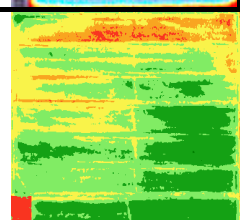
YIELDMAP™— requires yield monitor data provided by grower

Shows differences in:

- Yield in 100wt. per acre by area
- Calculates acres in each yield category

Use for:

Profitability mapping, yield change mapping and economic analyses



AG-RECON

2. CHARACTERIZE VARIABILITY

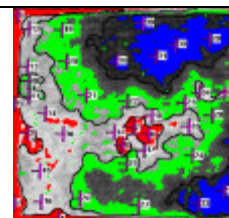
SmartSample™

Uses **GROWTHMAP™**, **STRESSMAP™** or **SOILMAP™** to show :

- Representative sampling locations

Use for targeted:

Soil and Plant Tissue Sampling; Pest, Disease and Maturity Scouting; and Yield Sampling for economic analyses



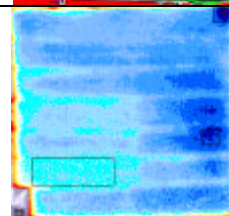
IRRIGATION AUDIT

Shows:

- Water management problems

Use for:

Analysis of water circulation patterns, cold water inlet dispersion impact areas, identification of leveling and contouring problems with shallow and deep water spots



3. DEVELOP MANAGEMENT PLANS

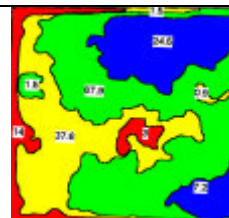
SmartZone™

Shows:

- Field management zones

Use for:

- Developing and assigning management prescriptions for each area within the field to optimize \$ returns on inputs and crop profitability



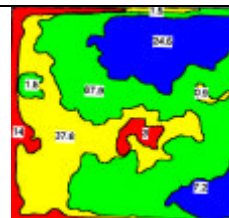
4. IMPLEMENT MANAGEMENT PLANS

SmartApp™ — Custom variable rate application services are available, existing application equipment can be converted to variable rate capability inexpensively

Shows: Prescription developed for each management zone

Use for:

- Controlling variable rate or selective fertilizer, soil amendment, herbicide, pesticide applications or selective leveling or land modification



5. MEASURE BENEFITS

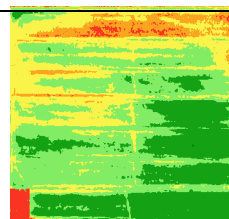
PROFITABILITYMAP— requires yield monitor data and production costs

Shows:

- Net revenue by area
- Calculates acres by profit category

Use for:

Economic Analyses, optimizing field boundaries for maximum profitability



YIELD CHANGEMAP— requires 2 years or more of yield monitor data

Shows:

- Yield differences comparing from one years yield to another year (in 100wt.)

Use for:

Evaluation of \$ impact of production problems and \$ success of targeted management plans

